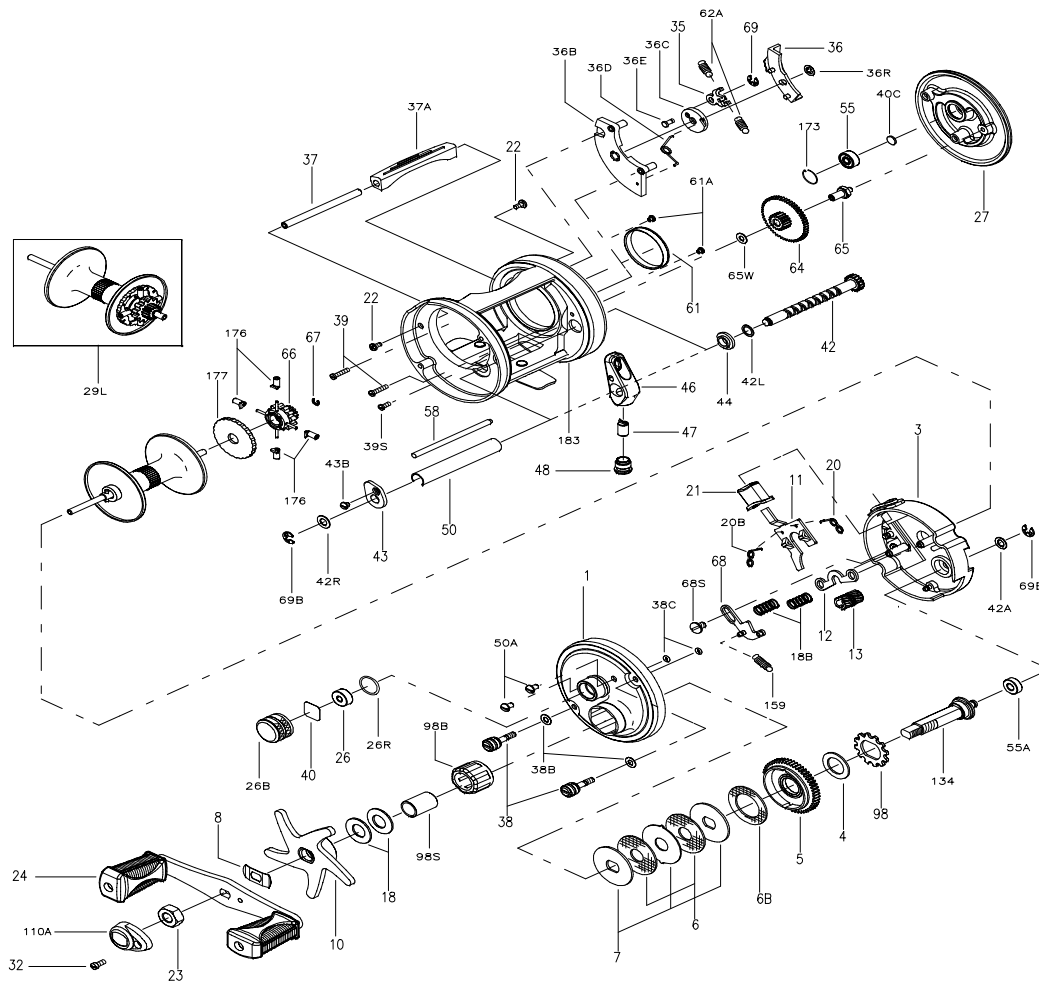




# PARTS LIST FOR MODEL 955 AND 965



| KEY NO. | DESCRIPTION                  | MODEL 955 PART NO. | MODEL 965 PART NO. |
|---------|------------------------------|--------------------|--------------------|
| 1       | Right Side Plate             | 001N965            | 001N965            |
| 3       | Inner R.S. Plate             | 003 965            | 003 965            |
| 4       | Fiber Washer                 | 004 060            | 004 060            |
| 5       | Main Gear                    | 005N965            | 005N965            |
| 6       | Drag Washer HT-100 (2 req.)  | 006 965            | 006 965            |
| 6B      | Drag Washer HT-100           | 006B965            | 006B965            |
| 7       | Metal Drag Washer (Set of 3) | 007C965            | 007C965            |
| 8       | Star Tension Washer          | 008 965            | 008 965            |
| 10      | Star Drag                    | 010 965            | 010 965            |
| 11      | Eccentric Jack               | 011 965            | 011 965            |
| 12      | Yoke                         | 012 965            | 012 965            |
| 13      | Pinion                       | 013N965            | 013N965            |

| KEY NO. | DESCRIPTION                   | MODEL 955 PART NO. | MODEL 965 PART NO. |
|---------|-------------------------------|--------------------|--------------------|
| 18      | Disc Clutch Spring (2 req.)   | 018 965            | 018 965            |
| 18B     | Yoke Spring (2 req.)          | 018B965            | 018B965            |
| 20      | R.S. Jack Spring              | 020 965            | 020 965            |
| 20B     | L.S. Jack Spring              | 020B965            | 020B965            |
| 21      | Clutch Release Button         | 021 965            | 021 965            |
| 22      | Post Screw (2 req.)           | 050 716            | 050 716            |
| 23      | Handle Nut                    | 023 965            | 023 965            |
| 24      | Handle Assembly               | 024 965            | 024 965            |
| 26      | R.S. Plate Bushing            | 026 965            | 026 965            |
| 26B     | Spool Tension Cap             | 026B965            | 026B965            |
| 26R     | Tension Cap 'O' Ring          | 026R965            | 026R965            |
| 27      | Left Side Plate               | 027 965            | 027 965            |
| 29L     | Spool Assembly                | 029L955            | 029L965            |
| 32      | Handle Cap Screw              | 032 015            | 032 015            |
| 35      | Click Tongue                  | 035 965            | 035 965            |
| 36      | Click Button                  | 036 965            | 036 965            |
| 36B     | Click Housing                 | 036B965            | 036B965            |
| 36C     | Click Wheel                   | 036C965            | 036C965            |
| 36D     | Click Wheel Spring            | 036D965            | 036D965            |
| 036E    | Click Tongue Pin              | 036E965            | 036E965            |
| 36R     | Retaining Ring                | 036R965            | 036R965            |
| 37      | Thumb Bar Post                | 037 955            | 037 965            |
| 37A     | Thumb Bar                     | 037A955            | 037A965            |
| 38      | Take-Apart Screw (2 req.)     | 038N965            | 038N965            |
| 38B     | Side Plate Washer (2 req.)    | 038BN965           | 038BN965           |
| 38C     | Screw 'O' Ring (2 req.)       | 038CN965           | 038CN965           |
| 39      | L.S. Plate Screw (2 req.)     | 039 965            | 039 965            |
| 39S     | L.S. Plate Short Screw        | 039S965            | 039S965            |
| 40      | Metal Thrust Washer           | 040C965            | 040C965            |
| 40C     | Metal Thrust Washer           | 040C310            | 040C310            |
| 42      | Worm Shaft                    | 042 955            | 042M965            |
| 42A     | Metal Washer                  | 042R965            | 042R965            |
| 42L     | L.S. Worm Shaft Washer        | 042L965            | 042L965            |
| 42R     | R.S. Worm Shaft Washer        | 042R965            | 042R965            |
| 43      | R.S. Worm Shaft Bushing       | 043 965            | 043 965            |
| 43B     | Worm Bushing Screw            | 043B965            | 043B965            |
| 44      | L.S. Worm Shaft Bushing       | 044 965            | 044 965            |
| 46      | Line Guide                    | 046 965            | 046 975            |
| 47      | Pawl                          | 047 975            | 047 975            |
| 48      | Pawl Cover Screw              | 048 965            | 048 965            |
| 50      | Worm Shield                   | 050 955            | 050 965            |
| 50A     | R.S. Plate Screw (2 req.)     | 050 716            | 050 716            |
| 55      | Ball Bearing                  | 055 113H           | 055 113H           |
| 55A     | Gear Stud Bushing             | 055A965            | 055A965            |
| 58      | Line Guide Post               | 058 955            | 058 965            |
| 61      | Brake Drum                    | 061 965            | 061 965            |
| 61A     | Brake Drum Screw (2 req.)     | 043B965            | 043B965            |
| 62A     | Click Spring (2 req.)         | 062A965            | 062A965            |
| 64      | Idler Gear                    | 064M965            | 064M965            |
| 65      | Idler Gear Pin                | 065 965            | 065 965            |
| 65W     | Idler Gear Washer             | 065W965            | 065W965            |
| 66      | Spool Gear Click Ratchet      | 066M965            | 066M965            |
| 67      | Lock Ring                     | 067 016S           | 067 016S           |
| 68      | Shift Arm                     | 068 965            | 068 965            |
| 68S     | Shift Arm Screw               | 068S965            | 068S965            |
| 69      | Retaining Ring                | 069B050            | 069B050            |
| 69B     | Retaining Ring (2 req.)       | 069B600            | 069B600            |
| 98      | Trip Ratchet                  | 098 965            | 098 965            |
| 98B     | Roller Bearing                | 098B965            | 098B965            |
| 98S     | Bearing Clutch Shaft          | 098S965            | 098S965            |
| 110A    | Handle Nut Cap                | 110A555            | 110A555            |
| 134     | Gear Stud                     | 134 965            | 134 965            |
| 159     | Shift Arm Spring              | 159 965            | 159 965            |
| 173     | L.S. Bearing Retainer         | 173 965            | 173 965            |
| 176     | Anti-Backlash Brakes (4 req.) | 176 965            | 176 965            |
| 177     | Brake Selection Knob          | 177 965            | 177 965            |
| 183     | Frame Assembly                | 183 955            | 183N965            |